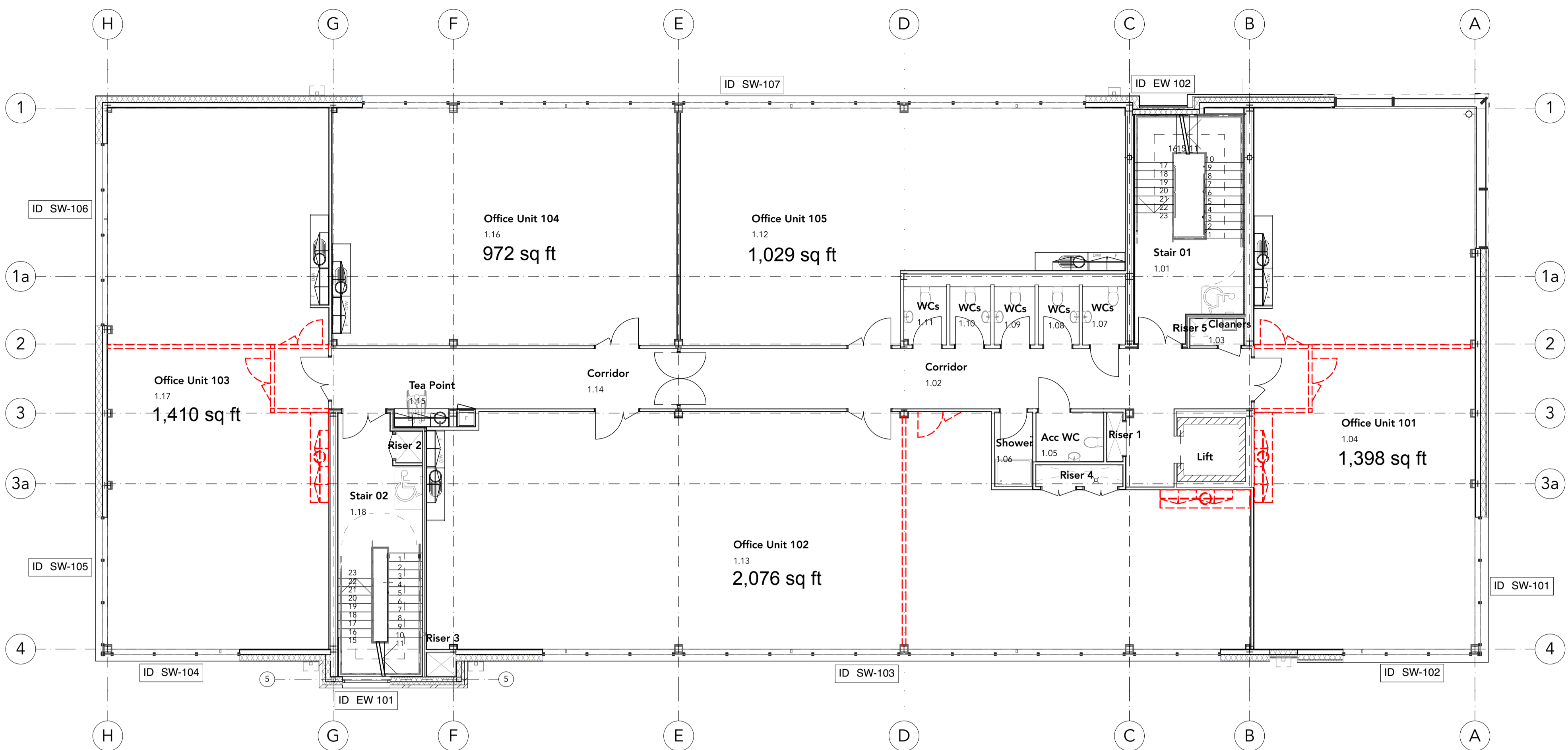


**CONSTRUCTION PHASE HAZARD IDENTIFICATION**  
 In accordance with the Construction (Design & Management) Regulations 2015

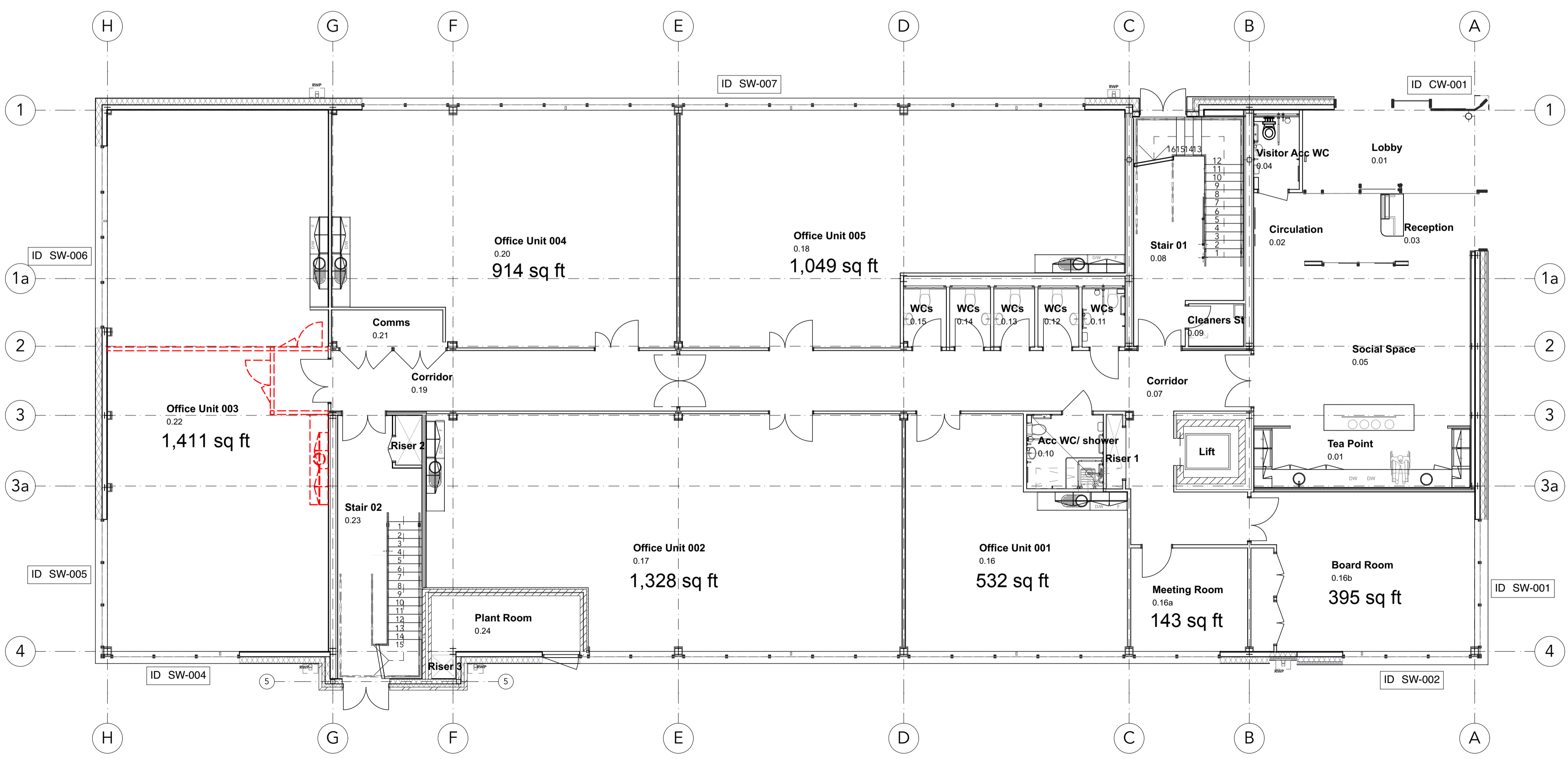
The hazard sign is a notification to other designers and contractors of foreseeable exceptional risks resulting from the design activities carried out by Maber Associates Ltd. which are beyond those reasonably expected to be identified by a competent person: as defined in the 'Construction (Design and Management) Regulations 2015' - Regulations 9 & 10 and Industry Guidance for Designers (Section 4) published by the CITB (2015)

<b>DRAWING REVIEWED:</b> (yes OR no)	<b>YES</b>
<b>EXCEPTIONAL RISKS/ RISK CONTROL MEASURES:</b> (none OR see warning triangle on drawing)	

----- Future flexibility divisions and tea points.



01 01 GA 1:100

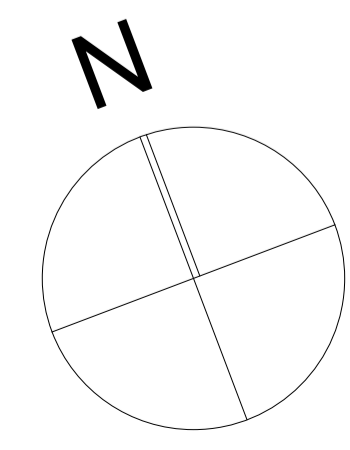


01 01 GA 1:100

- P04 26.09.19 Unclouded revisions: Office tea points amended. JWc CLa
- P03 25.09.19 Unclouded revisions: Office tea points amended / relocated in accordance with M&E specialist layouts. JWc CLa
- P02 11.09.19 Unclouded revisions: Office tea points extended. Tea point added to Office Unit 103. Office Unit 102 future tea point relocated. Office Unit 001 tea point relocated. JWc CLa
- P01 19.08.19 FIRST ISSUE JWc CLa

rev	date	description	by	ckd

project	GOS - Compass Point								
document	Ground and First Floor GA Plans								
reference	project	origin	zone	level	type	role	no.	status	rev.
	GOS	MA	00	ZZ	DR	A	00310	S4	P04
int. job no.	2950		paper size	A1		scale	1:100		



architecture / interiors / landscape  
 Email: info@maber.co.uk  
 Tel: 0115 941 5555  
 maber.co.uk  
 issuing office  
**Nottingham**

**00310**

Do not scale from this drawing - dimensions and levels to be checked on site by the contractor. All dimensions in millimetres unless otherwise noted - all levels in metres unless otherwise noted. The title, copyright and confidential information in this document belongs to Maber Associates Limited. Copyright 2019. All rights reserved. You may not reproduce this document or disclose it to others without the consent of Maber Associates Limited.